

# 深圳易天光通信有限公司

ETU-LINK TECHNOLOGY CO., LTD

5G

Version NO.: 2507001

Planning: Business Assistant  
Dep

Copyright: ETU-LINK

VR: [https://www.etulinktechnology.com/vr\\_d36](https://www.etulinktechnology.com/vr_d36) (按住Ctrl并单击链接可访问)

# Content

 01 Company Profile

 02 Product Introduction

 03 R&D Capabilities

 04 Customers Base

 05 Corporate Culture

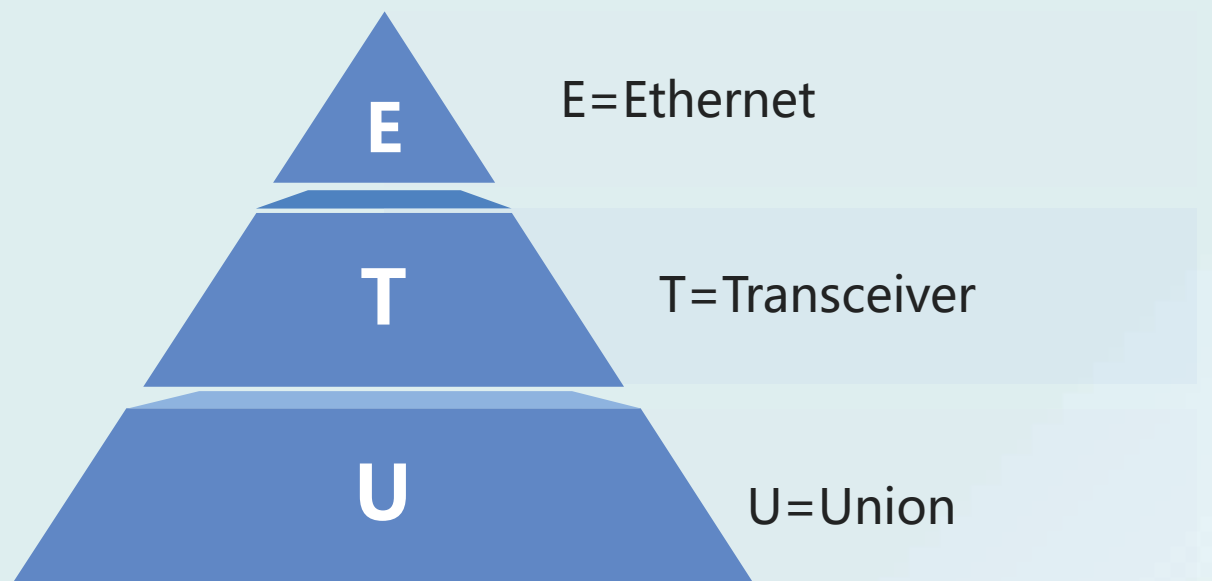


# 深圳易天光通信有限公司

ETU-LINK TECHNOLOGY CO., LTD

ETU-LINK  
易天·光通信

(ETU-LINK, short for ETU), It' s one national **High-Tech** enterprise focusing on the Research, Development, Production and Sales of new technologies and new products in the field of optical modules, and is striding towards becoming a Little Giant.



## ETU Brand Interpretation



Change the online world and improve the quality of life.



## Main Products

Optical Transceiver (SFP, SFP+, SFP28, QSFP+, QSFP28, QSFP56, QSFP-DD, OSFP.....)

## “ Top 3 ”



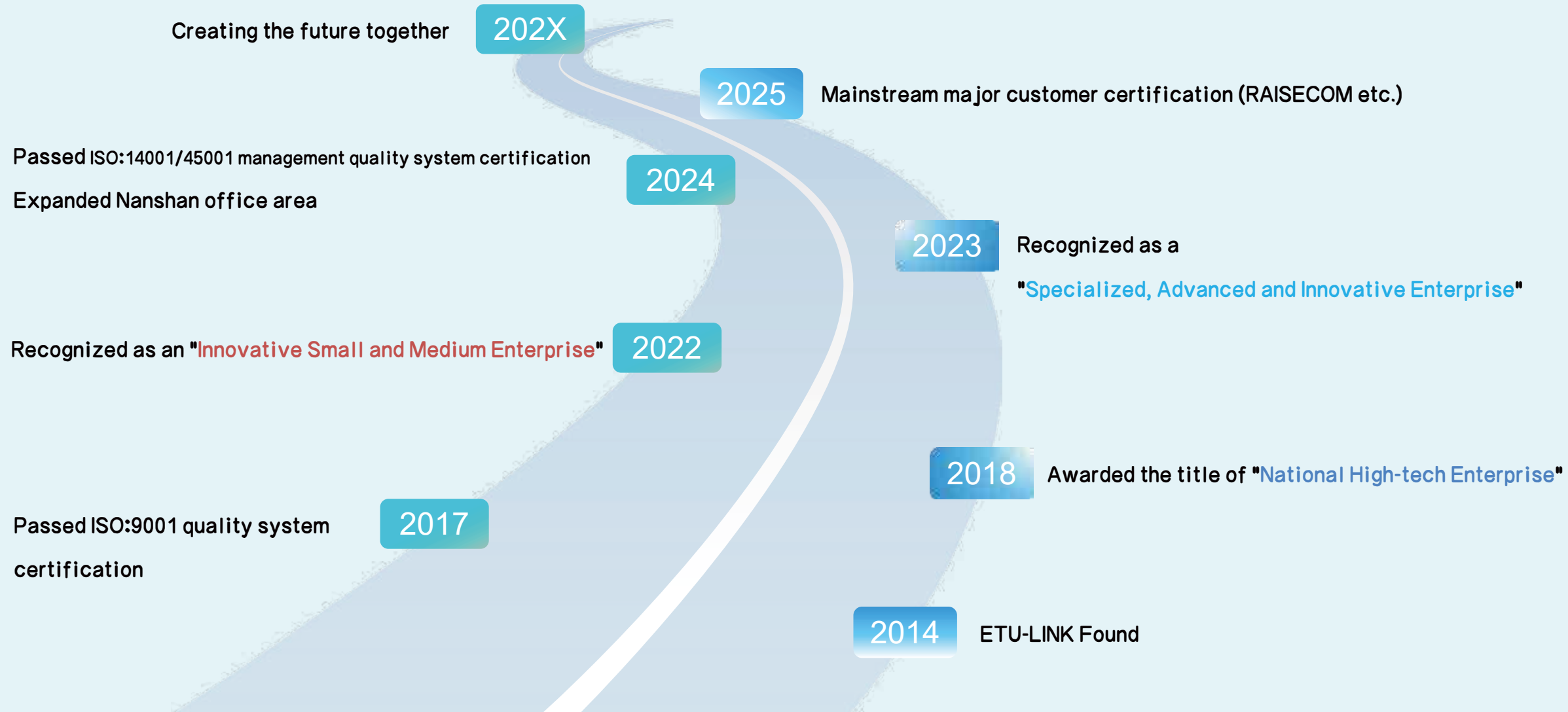
**Top1:**100G ER4 40KM  
**Top2:**100G ZR4 80KM  
**Top3:**100G LR4 10KM  
**Total Percent: 30~40%**

## Application

Ethernet、 FTTH、 SDH/SONET、  
Network storage etc

Craftsmanship never wastes time

# Development History





# Production Strength

- Efficient and high-quality production to meet customer needs and deliver on time. Delivery rate 98%



**ETU Team**  
**100<sup>+</sup> Employees**

**Produce Capacity**  
**70~100K / Month**

# Content

 01 Company Profile

 02 Product Introduction

 03 R&D Capabilities

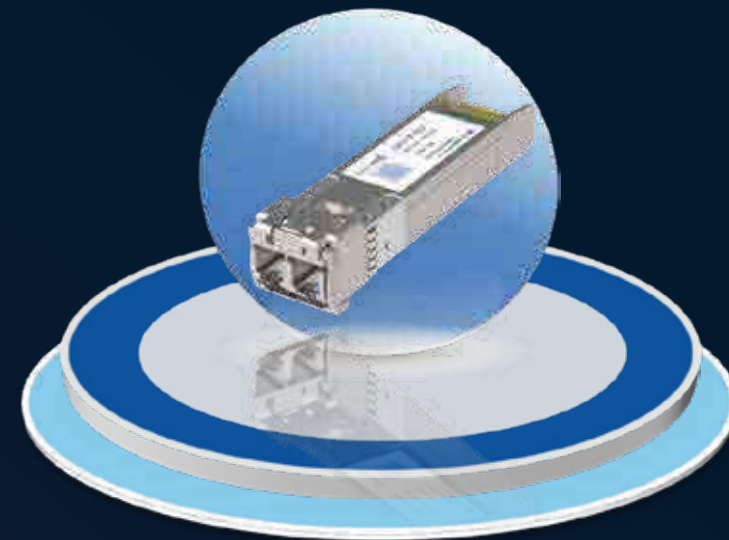
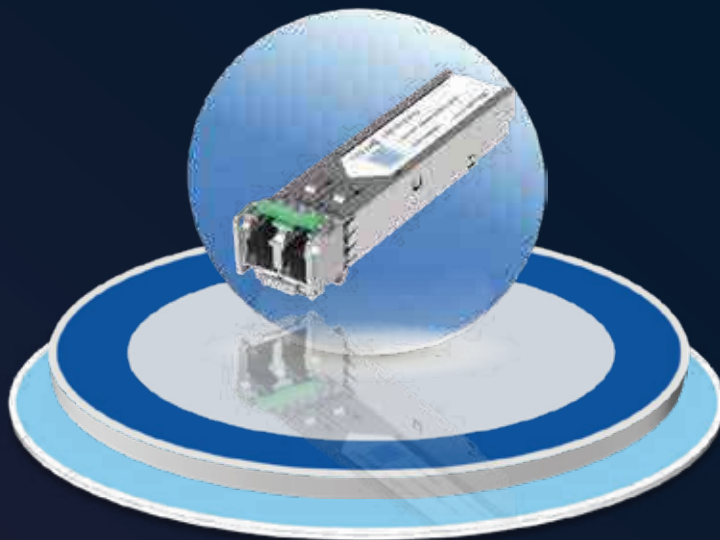
 04 Customers Base

 05 Corporate Culture



# Optical Transceiver

SFP/SFP+ Series



**Data Rate: 155M, 622M, 1.25G, 2.5G, 4.25G, 6G, 8G, 10G**

**Distance: 100M, 220M, 300M, 550M, 2KM, 10KM, 20KM, 40KM, 60KM, 80KM, 100KM, 120KM(10G)  
160KM, 200KM(1.25G)**

**Connector: LC, SC, RJ45**



# Optical Transceiver

SFP28/QSFP+/QSFP28/  
OSFP/QSFP-DD Series



**25G SFP28**

- Connector : LC
- Distance : 100M,10KM, 20KM, 30KM, 40KM, 60KM, 80KM
- CWDM&DWDM, DWDM Tunable , LWDM 10/20/40KM



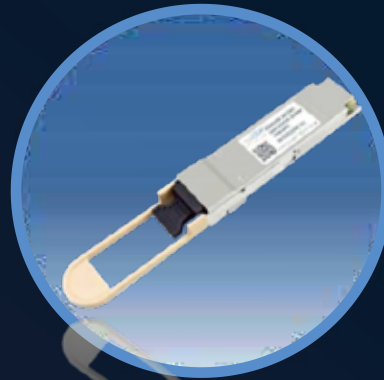
**40G QSFP+**

- Connector: MPO, LC
- Distance: 100M, 400M, 2KM, 10KM, 40KM, 80KM



**100G QSFP28**

- Connector: MPO,LC
- Distance: 100M, 2KM, 10KM, 30KM, 40KM, 60KM, 80KM
- LR1, ER1, LR1 BIDI, ER1 BIDI



**200G QSFP56/QSFP-DD**

- Connector: MPO,LC
- Distance: 100M, 2KM



**400G OSFP/QSFP-DD**

- Connector: MPO, LC
- Distance: 100M, 500M, 2KM, 10KM



**800G OSFP**

- Connector: MPO
- Distance: 100M, 500M

# Roadmap



产品		温度
100G	QSFP28 SR4 100M	🔥
	QSFP28 LR4 10KM	🔥
	QSFP28 EML ER4 Lite 30KM	
	QSFP28 DML ER4 Lite 30KM	
	QSFP28 DML ER4 40KM	🔥
	QSFP28 EML ER4 40KM	
	QSFP28 ZR4 80KM	
	QSFP28 eZR4 100KM	
	QSFP28 LR1 10KM	
	QSFP28 ER1 40KM	
	QSFP28 O-Band DWDM 10KM	★
	QSFP28 LR1 BIDI 10/20KM	🔥
	QSFP28 ER1 BIDI 40KM	
	QSFP28 ZR4 BIDI 80KM	★
400G	OSFP SR4 100M	
	QSFP112 SR4 100M	
	QSFP-DD SR4 100M	
	QSFP-DD SR8 100M	
	QSFP-DD DR4 500M	
	QSFP-DD LR4 10KM	
	QSFP-DD FR4 2KM	
	QSFP-DD LR8 10KM	
		Commerical Grade Extend Grade Industrial Grade
		Commerical Grade

🔥 Hot Sales Items

★ Strong Advantage Items

# Strong Advantge Items

Items	Picture
10G SFP+ 1550nm 120KM	
10G BIDI 1490/1550nm 100KM	
10G SFP+ DWDM Tunable 80KM	
25G SFP28 DWDM 40KM	
25G SFP28 1310/1300nm 80KM	
25G SFP28 Tunable DWDM 15KM	
25G BIDI 1295/1309nm 80KM	
40G QSFP+ ER4 DML+PIN	
40G QSFP+ 80KM EML+APD	

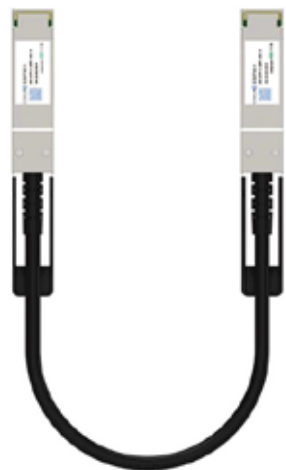
Items	Picture
100G QSFP28 LR4 (COB)	
100G QSFP28 DML ER4 Lite 30KM	
100G QSFP28 DML ER4 40KM	
100G QSFP28 ZR4 80KM	
100G QSFP28 ZR4 100KM	
100G BIDI 1270/1330nm 10KM	
100G BIDI 1290/1310nm 20KM	
100G BIDI 1304/1309nm 30~40KM	
100G BIDI 1273-1286/1295-1309nm 80KM	

# DAC Cable

10/25G DAC



40G DAC



100G DAC



400G DAC



800G DAC

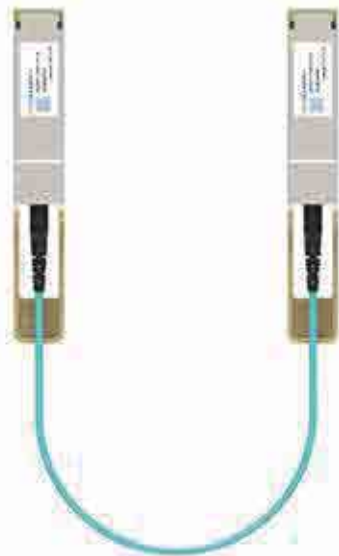


# AOC Cable

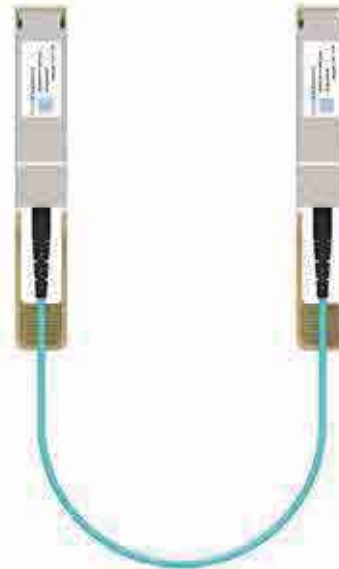
10/25G AOC



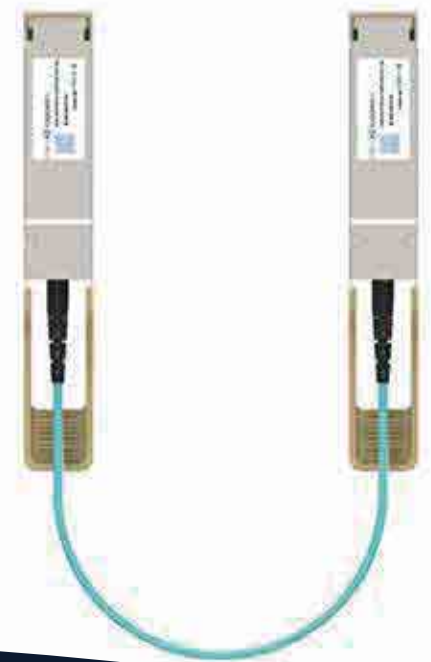
40G AOC



100G AOC



400G AOC





# Package Options

Package Type	Picture		Match Moduleds	Advantages
Individual			1.55M~25G	<ol style="list-style-type: none"> <li>1. Easy assembly and disassembly.</li> <li>2. Small size and <b>low shipping costs</b>, eliminating bulk and weight, reducing international express shipping costs and effectively improving cost optimization.</li> <li>3. Full-size label with <b>visible window for easy sorting</b>.</li> <li>4. Environmentally friendly materials, conducive to <b>resource recycling</b>.</li> <li>5. Blister boxes with serial number indication to <b>reduce misplacement</b>.</li> </ol> <p>Customization supported.</p>
10 pcs				
Individual			40G~400G(QSFP-DD)	
4 pcs				

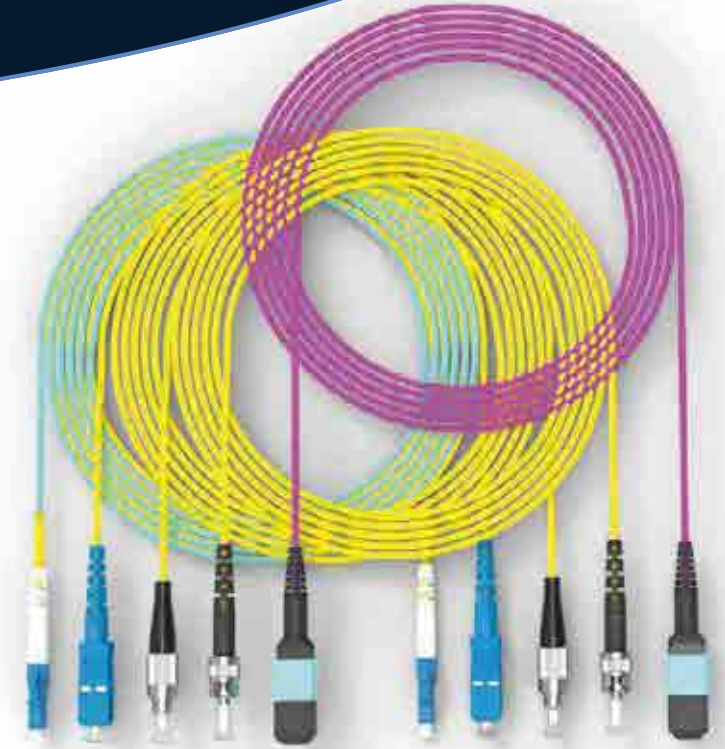
# Supporting Products



Adapater



Media Converter



Patch Cord

# Content

 01 Company Profile

 02 Product Introduction

 03 R&D Capabilities

 04 Customers Base

 05 Corporate Culture



# R&D

R&D Team



20+

Engineers

**Over 15 years** Optical communication line experience



100+

Patent achievements

Leading industry innovation with **6 Invention Patents**



Multiple **Software Copyrights** and **Utility Model Patents**

## Certification:

CE · FCC · RoHS · TUV · UL · CB · IEC

With its profound R&D background and market experience, ETU provides customers with solid technical support and efficient and reliable services.



# Test Equipment

Test Equipment



**Aging Box**

Single aging quantity: SFP 1000+pcs/QSFP  
400+pcs



**100G Bite Erro**



**400/800G Bite Erro**



**400G Oscilloscope (eye diagrammer)**



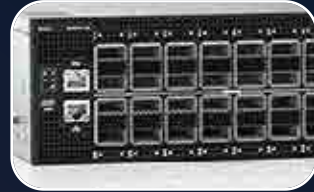
**Online high and low temperature chamber**



# Test Equipment

Test Equipment

## Switch Compatible Testing Platform



**Dell 400G Switch**



**Cisco 100G Switch**



**H3C 10G Switch**



**Arista 40G Switch**

## Testing Screen Capture









```


100G TX59Y/RX95Y 40KM CI/HW/JP/MAIPU

admin#
admin# show inter ethernet 1/62
Ethernet1/62 is up
admin state is up, Dedicated Interface:
  Hardware: 10000/40000/100000 Ethernet, address: b4de.3194.a737
  a775)
  MTU 1500 bytes, BW 1000000000 Kbit, DLY 10 usec
  reliability 255/255, txload 1/255, rxload 1/255
  Encapsulation ARPA, medium is broadcast
  full-duplex, 100 Gb/s, media type is 100G
  Beacon is turned off
  Auto-Negotiation is turned on FEC mode is Auto
  Input flow-control is off, output flow-control is off
  Auto-mdix is turned off
  Rate mode is dedicated
  Switchport monitor is off
  EtherType is 0x8100
  EEE (efficient-ethernet) : n/a
  Last link flapped 00:00:27
  Last clearing of "show interface" counters never
  3 interface resets
  Load-Interval #1: 30 seconds
    30 seconds input rate 336 bits/sec, 0 packets/sec
    30 seconds output rate 336 bits/sec, 0 packets/sec
    input rate 336 bps, 0 pps; output rate 336 bps, 0 pps
  Load-Interval #2: 5 minute (300 seconds)
    300 seconds input rate 16 bits/sec, 0 packets/sec
    300 seconds output rate 16 bits/sec, 0 packets/sec
    input rate 16 bps, 0 pps; output rate 16 bps, 0 pps
  
```

# Switch List

Switch List

Brand	Switch model	Matching rate
	DELL S5048F-ON	10G/25G/40G/100G
	DELL Z9432F-ON	100/400G
	<u>Alcatel-Lucent OS6250-8M</u>	155M/1.25G
	<u>OmniSwitch 6850E-U24X</u>	1.25G/10G
	<u>OmniSwitch 6850 U24X</u>	1.25G/10G/40G
	<u>Alcatel-Lucent OS6860E-48</u>	10G/40G
	JUNIPER EX2200-C	155M/1.25G
	JUNIPER EX4200 series 8POE	1.25G/10G
	HUAWEI S6720S-26Q-LI-24S-AC	10G/40G
	HUAWEI SN3664	10G/25G/100G
	<u>HUAWEI Quidway S5700 series S5700-28C-SI</u>	155M/1.25G
	ARISTA 7050QX-32	40G
	<u>Mikrotik RB2011UiAS-2HND-IN</u>	1.25G
	<u>Mikrotik CRS226-24G-2S+RM</u>	10G
 	Hp 2530-8G POE+ Switch J9774A	1.25G
	<u>Hp procurve 6600-24G-4XG</u>	1.25G/10G
	Aruba 3810M JL075A	1.25G/10G/40G
	Aruba 2930F JL254A	10G

Brand	Switch model	Matching rate
	CISCO C9500 24Y1C	1G/10G/25G 40G/100G
	CISCO C3850 NM BLANK	10G
	CISCO catalyst 3850 XS 10G	10G
	CISCO 3750-E、CISCO IE 3000	10G
	CISCO catalyst 2960G	1.25G
	N9K-C9348GC-FXP	10G/25G/40G/100G
	CISCO NEXUS N9K C9364C	1G/10G/40G/100G
	CISCO NEXUS N9K-C93180YC	10G/25G/40G/100G
	CISCO ASR920	10G
	H3C S5810	1.25G/10G
	H3C S3100V2	1.25G
	VOI KTFK MFN-4110B	100/1000M/1.25G
	MOXA EDS-510E	155M/1.25G
	E580-48X2Q4Z	1.25G/10G/40G/100G
	<u>Mellanox SB7800</u>	100G
	Fg-1000c	10G
	F5-Jiaz-CZBU	10G



# Workshop

Workshop Disply

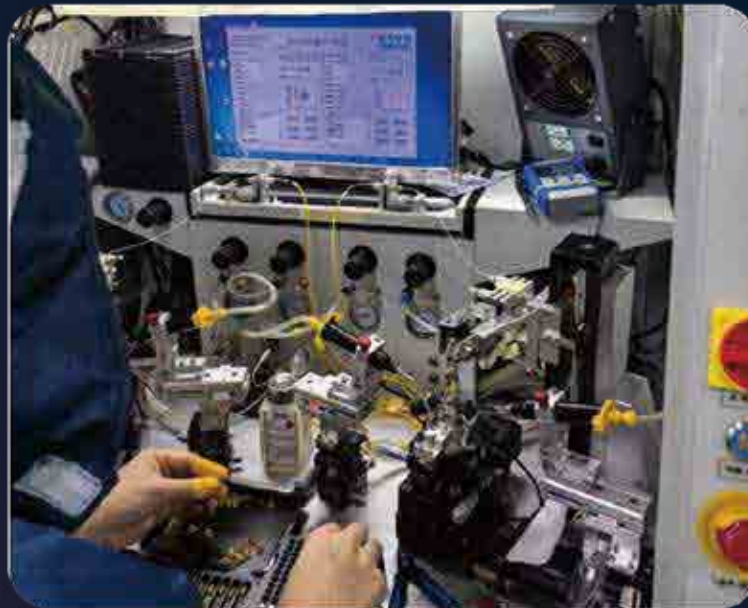
## Automation equipment

The workshop uses fully automated equipment such as laser welding, automatic coupling, and automated testing to ensure that every product produced is qualified.

### Laser Welding



### Automatic coupling



### Automated test bench



# Work System

Work System

ETU-LINK  
易天·光通信



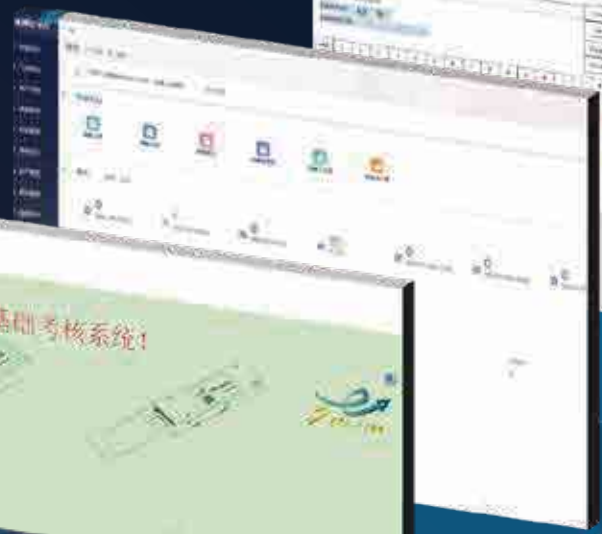
HR Management System

The organization's "All-round partner", digital management, stimulates talent vitality and cultural identity.



Examination System

A "Training Ground" for talents, using exams to promote learning and continuously improve the team's combat effectiveness.



ERP

The company's "Data Hub" integrates resource optimization, enabling intelligent decision-making and cost reduction and efficiency improvement.



Coding System

The "Innovation Engine" developed by us and the independently innovative coding system ensure efficient code development and absolute reliability.



Mes System

"Smart Brain" of the production process, fully transparent and traceable, helping to build a digital smart factory.

[全屏播放状态下点击观看编码系统演示](#)



# Content

 01 Company Profile

 02 Product Introduction

 03 R&D Capabilities

 04 Customers Base

 05 Corporate Culture





# Partners

Partner

## Operator



## Equipment Manufacturer



## OEM Clients



# Domestic Market

Domestic Market



Sales Share

35%



Full market coverage,

Mainly concentrated in:

Beijing Shanghai Guangzhou Shenzhen

China Union



Data Center



China Telecom



# Overseas Market

International Market

ETU-LINK  
易天·光通信



Sals Share

65%



Global coverage

108 Countries



One Customers

568 orders



# Exhibition

**ETU-LINK**  
易天·光通信



2018  
Shenzhen CIOE



2019  
Singapore  
CommunicAsia



2019  
Shenzhen  
CIOE



2023  
Vietnam  
ICT



2024  
Shenzhen  
CIOE



2025  
Shenzhen  
CIOE



# Customer Communication

Customer Engagement



Meeting Excellent Moment Together



# Content

 01 Company Profile

 02 Product Introduction

 03 R&D Capabilities

 04 Customers Base

 05 Corporate Culture



# Activities

Activity



Strive

There is an all-out struggle here

There is also the joy of laughing heartily

This is the stage for the  
collision of ideas

It is also a harbor for  
mutual support

Explore

Team

# Win-win Future



Chinese  
Official  
Website



English  
Official  
Website



WeChat  
Official  
Account

## ETU-LINK TECHNOLOGY CO., LTD



**Factory:** On the right side of 3rd Floor, Baichuanda Industrial Park, No. 102, Longguan Express Road, Dalang, Longhua District, Shenzhen

**Office:** Floor 4, Building 4, Nanshan Yungu Phase II, Taoyuan Community, Xili Street, Nanshan District, Shenzhen



518109



0755-23284603



[www.etulink.com](http://www.etulink.com)